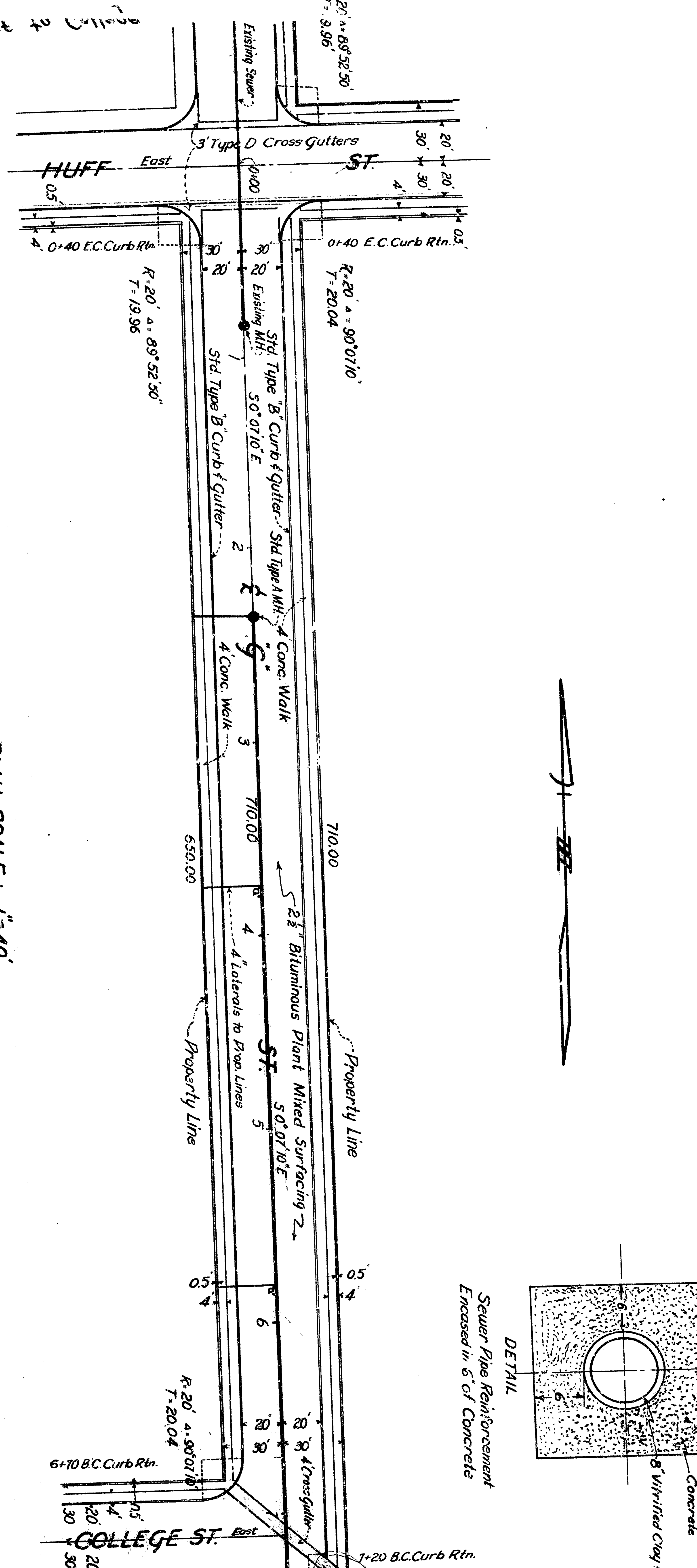
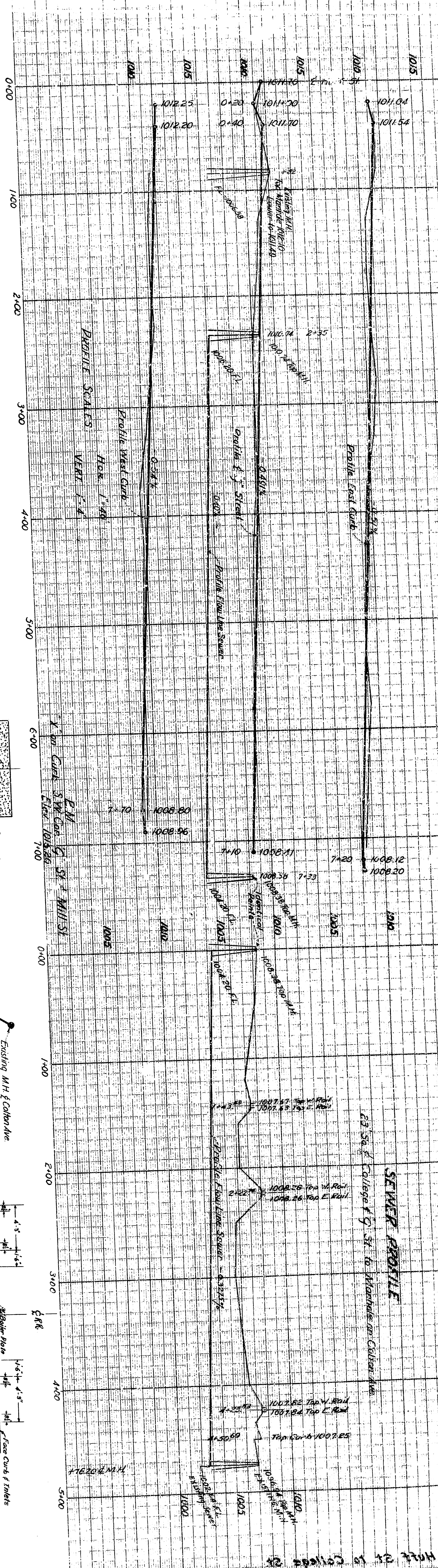
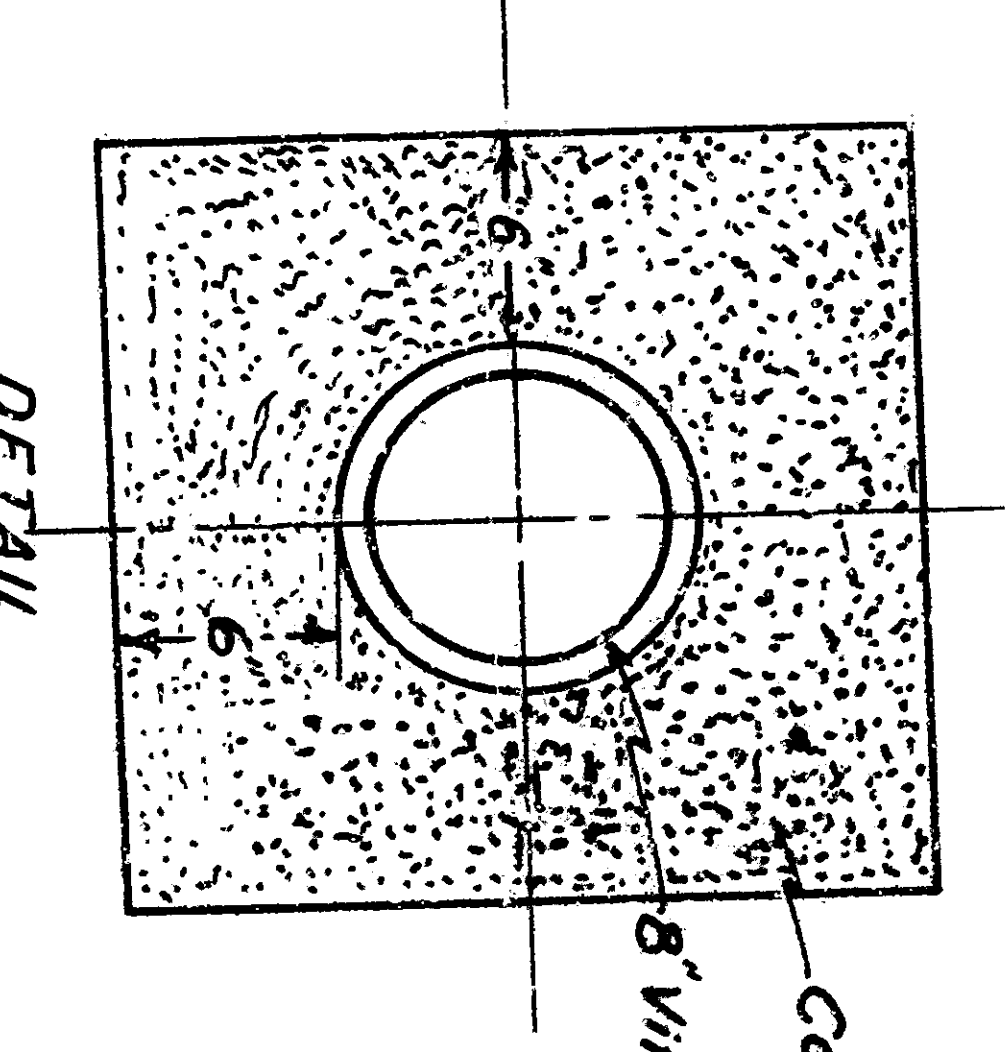


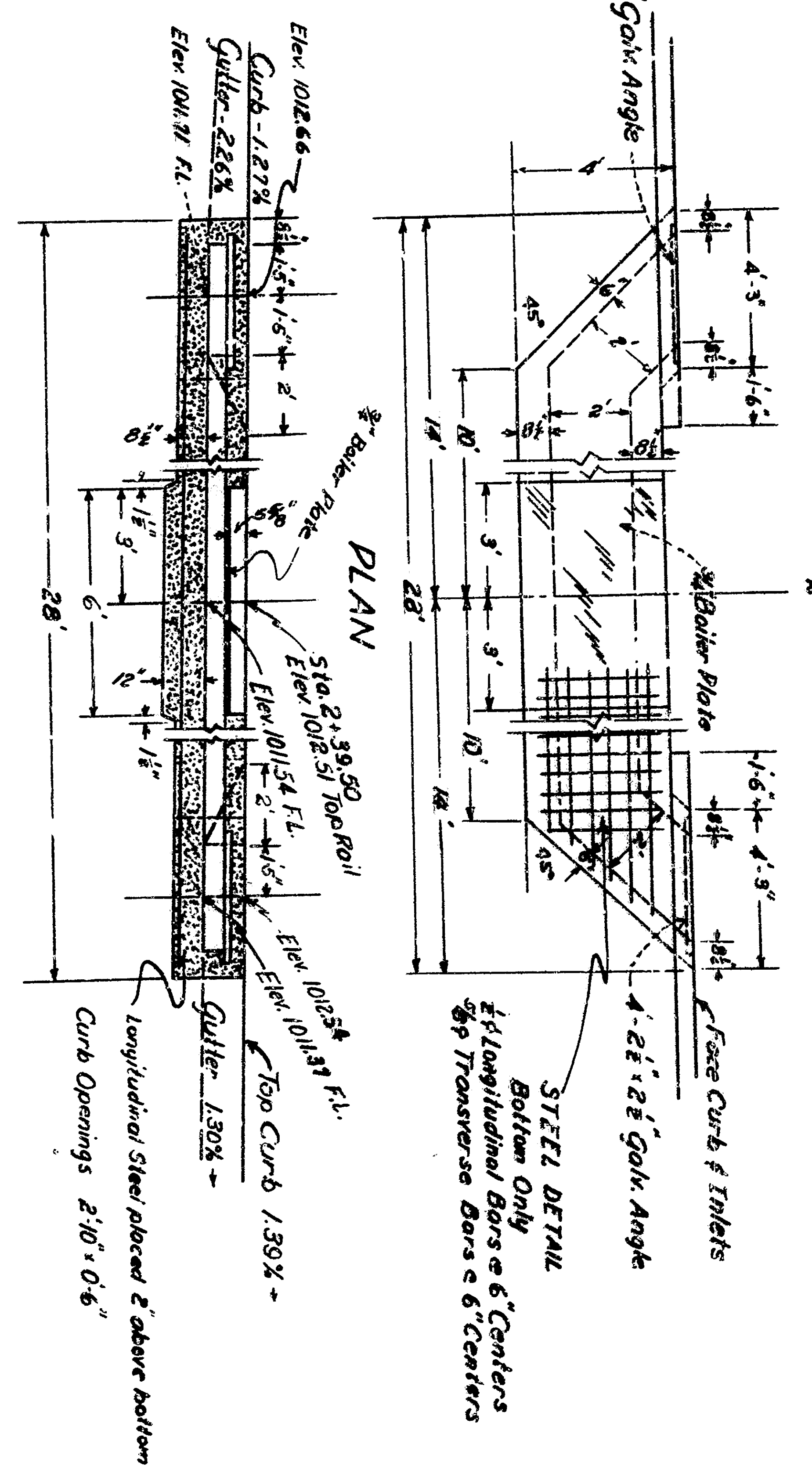
9" STREET



PLAN SCALE: 1"=40'



DETAIL
Sewer Pipe Reinforcement
Encased in 5" of Concrete



ELEVATION
COMBINATION CURB INLET AND CULVERT
Scale 1"=4'

NOTE
Sewer crosses under Pacific Electric Driv. - Sewer Pipe See elevation to be placed 10' from center of track at right 12'.
This M.H. to be connected to M.H. located at E. Colton Avenue, along Colton Avenue and 135' NE. from the corner of Adell Street with an Easement to be provided by Developer. (Approx. Flow Line grade to be 0.35%)

IMPROVEMENT PLANS
COLLEGE STREET - 9" STREET
HUFF STREET
FOULKE & CAMPBELL - ENGINEERING & SURVEYING
Sheet 2 of 2